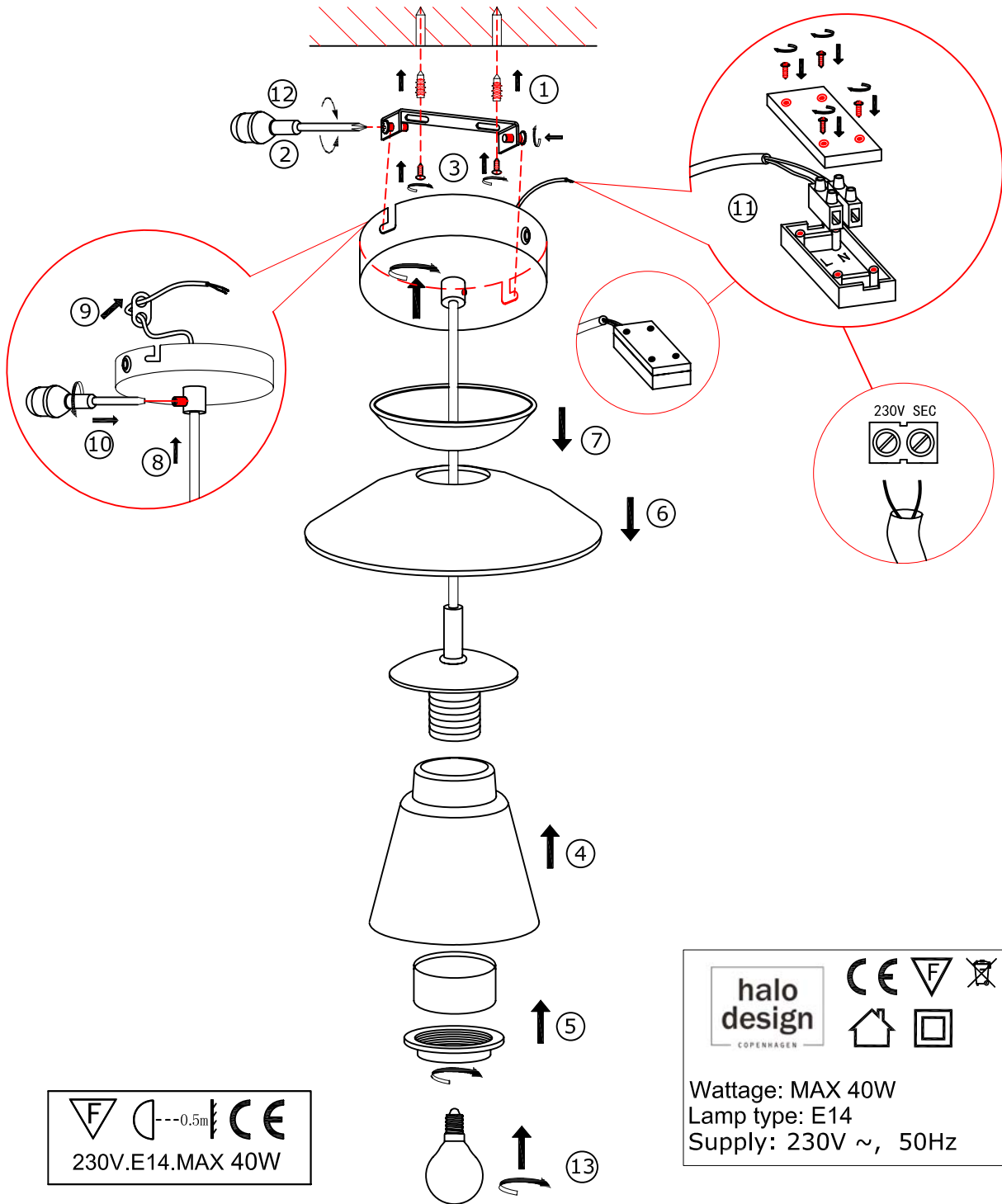






Midi Dallas Pendel









 230V.E14.MAX 40W

 Wattage: MAX 40W
 Lamp type: E14
 Supply: 230V ~, 50Hz

Step 1 : Make sure power is OFF on the outlet, before beginning the installation

Step 2 : Follow the instruction sketch above

Step 3 : Insert the light bulb

Step 4 : Go through point 1 to 3 before connecting the lamp to the power

Trin 1 : Vær sikker på at kontakten på væggen er slukket, således at der ikke er strøm på lampeudtaget/stikkontakten.

Trin 2 : Følg instruktions tegningen nøje ved samling af lampen.

Trin 3 : Isæt lyskilden

Trin 4 : Gennemgå instruktions tegningen inden der sættes strøm på lampe.

halo
design
 COPENHAGEN

Se vores øvrige sortiment på www.halodesign.dk